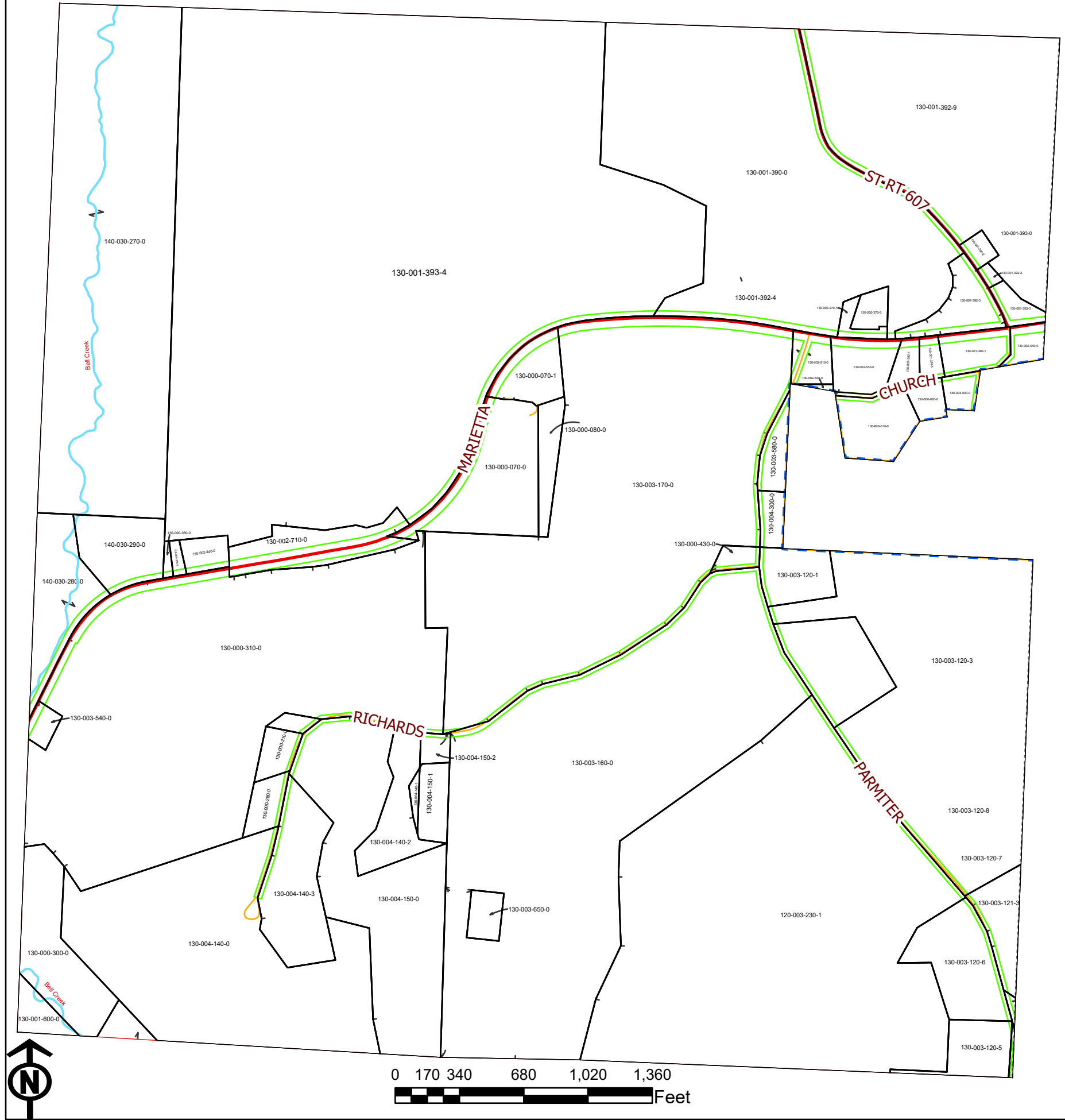


MORGAN COUNTY, OHIO

MORGAN TWP. SEC. 12, T-10, R-12



PIN	Owner	LegalDescr	VOL	PAGE	Acres
140-030-040-0	UNITED STATES OF AMERICA US ARMY	R12 T10 S01 SD 14	D.V 206	633	155.54
130-600-050-0	MORGAN COUNTY AGRICULTURAL	R12 T10 S13 0	D.V 198	560	49.31
130-003-650-0	SHRIVER RICK C	R12 T10 S12 SD 57	OR5	125	1
130-000-300-0	THREE LANE PROPERTIES LLC	R12 T10 S12 SD 34	OR234	798	5.996
130-004-140-0	RILEY COURTNEY	R12 T10 S12 SD 13	OR231	4078	27.698
130-004-140-3	WHITEHOUSE JAMES B	R12 T10 S12 SD 71	OR137	538	6.04
130-000-280-0	BEST TERRILL G & VICKI TRUSTEES	R12 T10 S12 SD 55	OR220	765	1.18
130-004-140-1	HANSON MICHAEL L & KIMBERLY J	R12 T10 S12 SD 64	OR163	446	0.206
130-004-150-1	HANSON MICHAEL L & KIMBERLY J	R12 T10 S12 SD 63	OR163	446	1.721
130-004-150-2	HANSON MICHAEL L & KIMBERLY J	R12 T10 S12 SD 69	OR163	446	0.715
130-004-140-2	HANSON MICHAEL L & KIMBERLY J	R12 T10 S12 SD 68	OR163	446	3.091
130-000-210-0	BEST TERRILL G & VICKI TRUSTEES	R12 T10 S12 SD 43	OR220	765	1.14
130-004-150-0	HANSON MICHAEL L & KIMBERLY J	R12 T10 S12 SD 18	OR163	446	17.39
130-000-220-0	BEST TERRILL G & VICKI TRUSTEES	R12 T10 S12 SD 44	OR220	765	0.57
130-003-540-0	MOODY SUSAN A	R12 T10 S12 SD 35A	OR211	592	0.651
120-003-230-1	FERGUSON JARED J & KAREN L	R11 T10 S07 SD 65	OR219	187	0.153
130-003-160-0	SHRIVER RICKY CRAIG	R12 T10 S12 SD 19	OR188	77	57.31
130-003-120-1	HEDGES CYNTHIA SUSAN & CYNTHIA S	R12 T10 S12 SD 66	OR221	668	2.465
130-000-430-0	SPURLOCK DOUGLAS V & TINA M	R12 T10 S12 SD 37	OR232	4036	0.63
130-000-360-0	CINQUEPALMI MICHAEL T	R12 T10 S12 SD 25	OR202	2106	0.16
130-000-370-0	CINQUEPALMI MICHAEL T	R12 T10 S12 SD 27	OR202	2106	0.26
130-002-440-0	BELL MELVIN JR	R12 T10 S12 SD 28	OR233	5753	0.976
130-000-310-0	THREE LANE PROPERTIES LLC	R12 T10 S12 SD 9	OR115	299	56.453
140-030-290-0	UNITED STATES OF AMERICA US ARMY	R12 T10 S12 SD 7	D.V 206	633	3.42
140-030-280-0	UNITED STATES OF AMERICA US ARMY	R12 T10 S12 SD 6	D.V 206	633	3.58
130-003-120-4	GLENN E JEAN	R12 T10 S12 SD 78	OR219	241	0.098
130-002-710-0	HUFFMAN TRACI L	R12 T10 S12 SD 8	OR232	1839	4.11
130-004-300-0	YOUNG BARRY ALLEN & WILLIAM LEE &	R12 T10 S12 SD 46	OR96	77	0.99
130-600-010-0	CALVARY BAPTIST CHURCH OF	R12 T10 S12 SD 53			2.97
130-600-020-0	CALVARY BAPTIST CHURCH	R12 T10 S12 SD 54			0.86
130-004-030-0	FOUST DEBRA JO	R12 T10 S12 SD 61	OR225	340	0.786
130-003-580-0	HUTCHINS PAUL D & BRENDA J	R12 T10 S12 SD 45	OR103	327	1.39
130-001-391-5	MORGAN TOWNSHIP TRUSTEES	R12 T10 S12 SD 70	OR27	92	0.604
130-002-510-0	MILLER JAMES B & CHERYL D	R12 T10 S12 SD 47	D.V 172	476	1.27
130-000-070-0	APPERSON BEULAH E TRUSTEE OF	R12 T10 S12 SD 24	OR36	474	3.253
130-000-080-0	APPERSON BEULAH E TRUSTEE OF	R12 T10 S12 SD 2	OR36	474	2.198
130-001-390-1	TRUST MALTA JEHOVAHS WITN C/O	R12 T10 S12 S D 62	D.V 187	19	1.742
130-001-392-3	ALDERMAN SUSAN J	R12 T10 S12 SD 77	OR236	213	2.55
130-003-170-0	SHRIVER RICKY CRAIG	R12 T10 S12 SD 40	OR190	244	53.968
130-000-270-1	STATE OF OHIO DEPT OF	R12 T10 S12 SD 75	OR202	2811	0.683
130-000-270-0	S & T DOWNS ENTERPRISES LLC	R12 T10 S12 SD 60 EX	OR222	2328	0.672
130-001-392-2	STINE BART E & SANDRA D	R12 T10 S12 SD 76	OR233	1069	0.209
130-001-390-2	STINE BART E & SANDRA D	R12 T10 S12 SD 65	OR233	1069	0.52
140-030-270-0	UNITED STATES OF AMERICA US ARMY	R11 T10 S12 SD 5	D.V 206	633	42.5
130-002-520-0	MILLER JAMES B & CHERYL D	R12 T10 S12 SD 48	D.V 172	476	0.12
130-002-530-0	MILLER JAMES B & CHERYL D	R12 T10 S12 SD 50	D.V 172	476	2.11
130-001-392-1	KING ANCIL & DAREL KUNTZ & TOM	R12 T10 S12 SD 72	OR147	718	0.879
130-000-930-0	FERGUSON JARED J & KAREN L	R12 T10 S13 SD 29	D.V 181	608	21.25
130-001-600-0	ARNOLD HILLARY J	R12 T10 S12 SD 11	OR213	447	0.34
120-003-230-0	GLENN E JEAN	R11 T10 S07 SD 11	D.V 125	287	84.347
120-005-160-0	LAWRENCE NINA M & STEVEN D	R11 T10 S07 SD 5 LE	OR14	385	1.741
120-006-870-0	WILLIAMS RANDEL D TOD-TERI L	R11 T10 S07 SD 27	OR141	416	4.77
130-003-120-2	SHRIVER RICKY CRAIG	R12 T10 S12 SD 73	OR188	77	5.013
130-003-121-3	GLENN E JEAN	R12 T10 S12 SD 81	OR219	241	2.321
130-003-120-3	HEDGES CYNTHIA SUSAN	R12 T10 S12 SD 74	OR188	77	33.143
130-003-120-6	KRIGBAUM KEVIN C & SARAH D	R12 T10 S12 SD 82	OR219	1179	5.015
130-002-540-0	THE MORGAN COUNTY	R12 T10 S12 SD 59 EX	OR233	3319	0.874
130-001-393-3	STINE BART E & SANDRA D	R12 T10 S12 SD 79	OR233	1069	0.883
130-001-393-4	CHARITY GAS INC.; A WEST VIRGINIA	R12 T10 S12 SD85	OR232	3721	134.728
130-003-120-0	HEDGES CYNTHIA SUSAN	R12 T10 S12 SD 22	OR188	77	62.026
130-003-120-5	FERGUSON JARED J & KAREN L	R12 T10 S12 SD 80	OR219	187	2.483
130-000-070-1	HODGE CARY R	R10 T12 S10 SD 83	OR231	265	2.419
130-001-392-9	HAINES ROBERT E & JULIE M	R10/T12/S12 SD 84	OR232	2687	29.275
130-001-390-0	HACKNEY RIDGE LAND VENTURES LLC	R12 T10 S12 SD 1	OR232	2191	43.164

Boundaries

Type

- County
- Hidden
- Hydro
- Parcel
- ROW
- Section
- Lot

..... <all other values>